

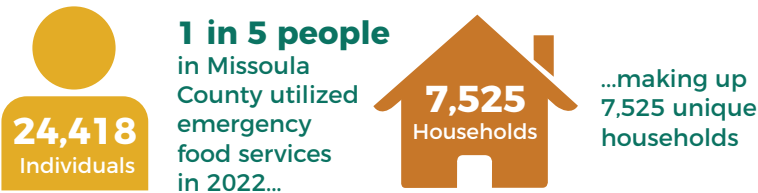


missoula food bank
& community center

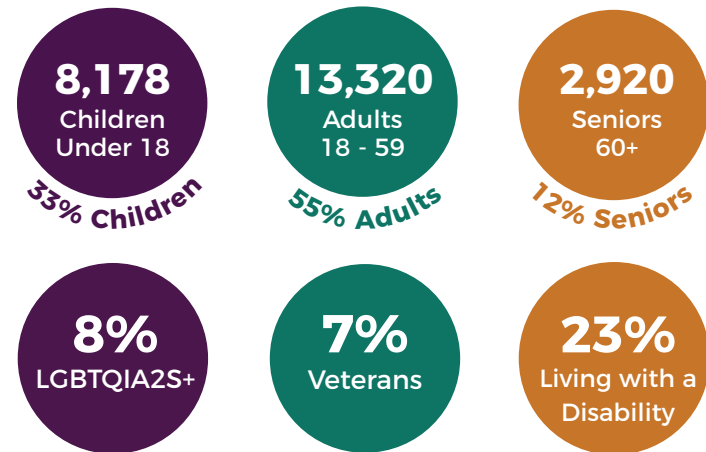
2022 in Review

We lead the movement to end hunger through advocacy, volunteerism, and healthy food for all. **We nourish community.**

THE STORE



OUR STORE CUSTOMERS ARE MADE UP OF



6,119
Unduplicated
Volunteers

39,365
Total
Volunteer Hours

SATELLITE PANTRIES

unique individuals served

Clinton 155
Bonner 112
Lolo 464

These bimonthly food distributions in neighboring communities provide shelf stable & nonperishable food to folks- barrier free!

Market at Lowell
635
grocery services provided

The Market at Lowell operates weekly during the school year to offer groceries to students, staff, & neighbors.

5,508
Resource
Referrals

TOP 3

SNAP
1,231

ROOTS
719

Energy Assistance
666

CHILDHOOD NUTRITION

KIDS TABLE

80,806
Afterschool meals

61,648
Summer meals

2,008
School Day participants

17
Partner Schools

EMPOWER PACK

41,524
Weekend Packs

1,176
Kids

35
Partners and meal sites

MOBILE MEAL BUS

7,811
Kids Table meals

1,000
EmPower Packs

1,060
Grocery services delivered



MEALS SERVED OUT OF EMPOWER PLACE

8,914
Kids Table summer meals

2,248
Weekend EmPower Packs

EmPower Place meals are accompanied with take home activities provided by EmPower Place and partner organizations.

APPLICATION ASSISTANCE

Utilizing social safety net programs is key to addressing hunger in our community.

321 → **137** for kiddos
SNAP/ Medicaid/ TANF applications submitted

366
Emergency Rental Assistance Program applications submitted

The family engagement team entered over **6,000 paper applications for free & reduced lunches** in K-12 cafeterias, reducing stigma, easing administrative burdens, & celebrating the possibilities of universal school meals in Missoula.

SENIOR NUTRITION

1,533
Fresh Food Boxes delivered

29%
Fresh Food Box customers pay by SNAP

431
Average # of ROOTS participants

4,780
ROOTS grocery boxes delivered

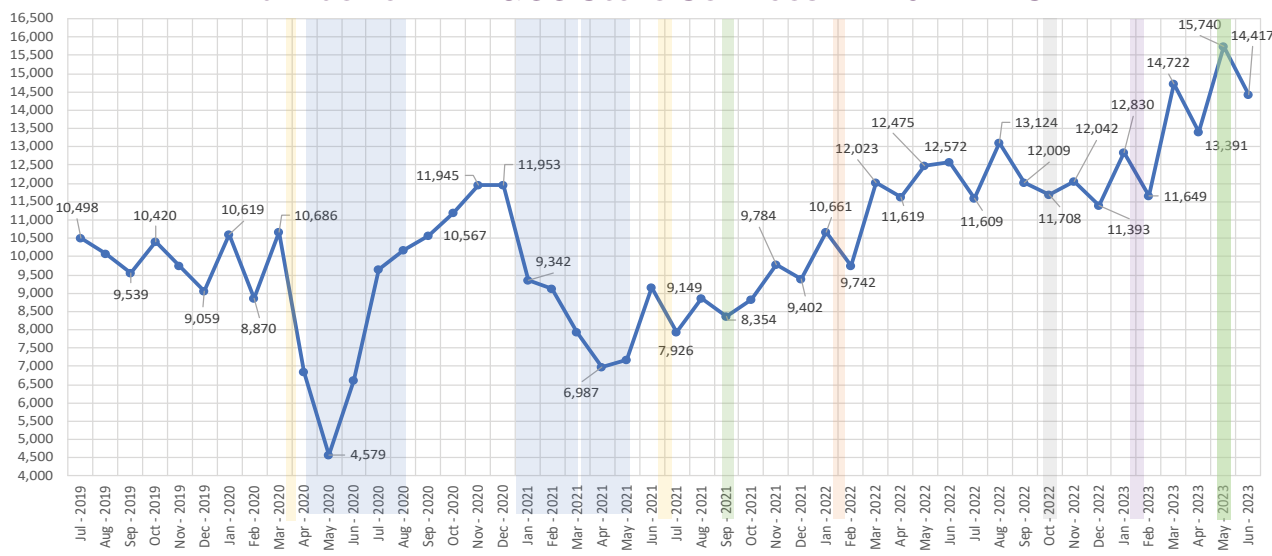
MFB&CC offers affordable home deliveries of fresh foods once per month for qualifying seniors and those living with disabilities.

Each Fresh Food Box contains fresh & frozen foods at the lowest possible prices.

Participants can half the cost by paying with SNAP.



Number of MFB&CC Store Services FY 20 - FY 23



May 2023 : DPHHS announces that the state of MT has opted out of Federal P-EBT benefits

January 2023 : Last payments distributed through the MT Emergency Rental Assistance

October 2022: SNAP benefits Increased

January 2022: Child Tax Credit ends

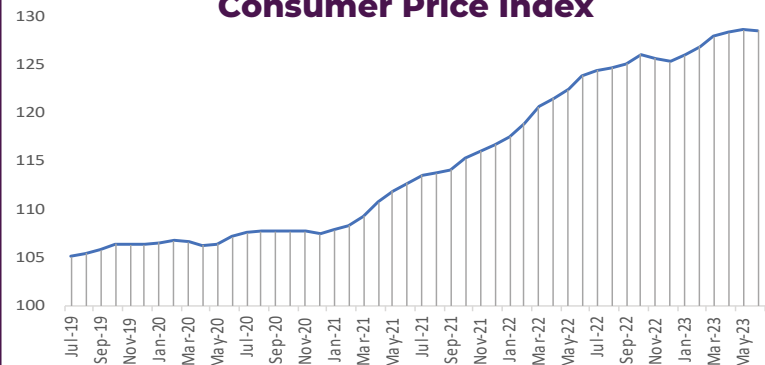
September 30th 2021: Pandemic boost for SNAP benefits end

June 2021: MFB&CC Reopens Store model

April 2020-May 2021: Economic Payments distributed

March 16th 2020-June 18th 2021: MFB&CC stops store model & begins emergency box model

Consumer Price Index



The **Consumer Price Index (CPI)** is a measure of the average change over time in the prices paid by consumers for goods and services such as housing, food, medical care, transportation, etc.

There's been a **22% increase** in 4 years.

Top Contributing Factors for Food Insecurity Reported by Customers of MFB&CC's Store

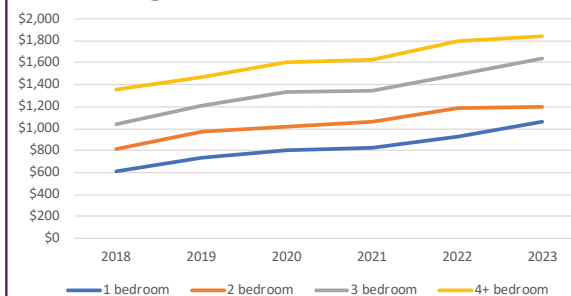
Housing costs
55% of responses

Food costs
47% of responses

Low Wages
45% of responses

Food insecurity may be long-term or temporary and can be influenced by a number of factors, most of which are ever present and co-occurring in our community and nation.

Average Rent Cost in Missoula



MFB&CC's Increase in Cost over last 5 Fiscal Years

Milk
28%

Oats
122%

Potatoes
155%



missoula food bank & community center
We Nourish Community.
www.missoulafoodbank.org | 406.549.0543