



missoula food bank
& community center

we nourish community



2022
annual report



Mission

We lead the movement to end hunger through advocacy, volunteerism and healthy food for all.

We nourish community.

Dear Friends & Supporters,



LETTER FROM THE EXECUTIVE DIRECTOR

Missoula Food Bank & Community Center wrapped up celebrating its 40th year in the community as I started as the Executive Director in early November. Settling into this new role, I am continually impressed with the many ways and places we connect the community with access to food.

We nourish community, not just in our Store here on Wyoming Street, but also in schools across our County, at afterschool programs throughout town, and on our Kids Eat Free Bus in some of the lowest income neighborhoods. We nourish our rural neighbors through satellite pantries and our aging neighbors with hand-packed food box deliveries every single month.

This report is full of highlights from this past year, but a few truly stand out to me.

Our choice model Store program served 7,525 households, 50,431 grocery shops this past year- a record in our 40-year history. And that doesn't count the 1,215 grocery shops at our four rural satellite pantries this last year. 41,524 Empower Packs went home with students who need food over the weekend in 2022. Not to mention the 143,881 school day, afterschool, and summer meals that Kids Table served. 6,313 seniors had food boxes delivered to their door monthly, ensuring no neighbor went without.

This nourishment has always been about more than just food. It's the people that make this work possible; they manifest the resiliency and generosity so abundant in our town. It's the people that make our work important; they are the lived experts vital to navigating improvement in our community. It's the people that make this work connected - the reminder that though many of our systems are built to oppress, this community is made to uplift. We come from our rural pantries to our bus stops to our store shelves, knowing that it is only together, that we can nourish community. And I look forward to the places we will go together in the years to come.

Sincerely, Amy

“ *Creating a dignified, equitable, & connective shopping experience for customers is at the root of the MFB&CC store.* ”

LYNN,
3 YEAR VOLUNTEER

Store

7,525
households

24,418
individuals

1 in 5
Missoula County
residents served



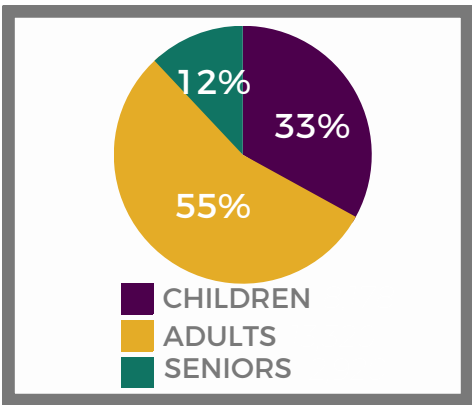
Demographics

Percentages for these identities are per household

7% VETERANS

8% LGBTQ2S+

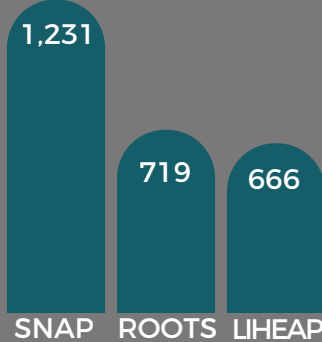
23% Living with a Disability



5,508
Resource Referrals

Volunteers

Top Resources Referred



“ *What I value most about MFB&CC is the opportunity each shift to make our customers' lives, as well as our own, just a little better.* ”
FRANK,
5 YEAR VOLUNTEER

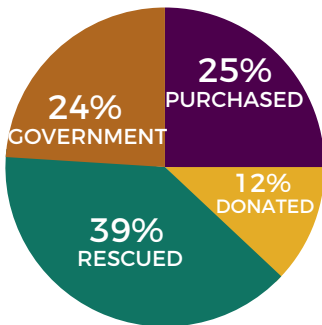
6,119
Unduplicated Volunteers

39,365
Total Volunteer Hours



“Donated food from individuals and businesses provides variety to our shelves, while purchased food keeps our shelves full of staple groceries and hardy produce. We are excellent stewards of our resources - our local partnerships allow us to purchase food at the lowest available price.”

GREGG , STAFF



WHERE OUR FOOD COMES FROM

ROOTS

4,805

ROOTS Boxes
distributed



457

Recipients in
Highest
enrollment
month

11,013 miles driven

*Because I don't have a car, the
ROOTS program is a real blessing!
I love the people who deliver my
food; The human interaction
really raises my spirits. And I
always use the food up.*

BARB, ROOTS CUSTOMER

SENIOR NUTRITION

1,379

Fresh Food Boxes
distributed

137

Recipients in Highest
enrollment month

31%

Participants that
pay by SNAP

3,924

miles driven

FRESH FOOD BOX



EMPOWER PACK



1,100
KIDS
SERVED
EACH
WEEKEND

“ Being able to customize EmPower Packs to fit the needs of kindergartners, grade schoolers, and high schoolers alike, vastly improves this essential weekend service for Missoula County kids. High schoolers experience a more dignified access point since we shifted to distributing via a grab & go pantry of easy to prep-meals.

JAMIE, STAFF ”

41,524
EMPOWER PACKS SERVED





EMPOWER PLACE

8,914

SUMMER MEALS

3,366

AFTERSCHOOL MEALS

2,248

EMPOWER PACKS

12,794

VISITORS TO EMPOWER PLACE



94 PARTNER AGENCY-LED ACTIVITIES

“ My favorite part of EmPower Place is when I can see all these kids having fun & playing. It makes my day! ”
RYDER, AGE 9



“Offering services in rural communities creates an intimate community connection between volunteers and customers right where they live.”

JESS, STAFF



LOWELL PANTRY
635
 GROCERY SERVICES PROVIDED



SATELLITE PANTRIES
 UNIQUE INDIVIDUALS SERVED

112 **155** **464** **13**
 BONNER CLINTON LOLO POTOMAC



MEETING FOLKS

604 UNIVERSAL
SCHOOL MEAL
PETITIONS COLLECTED



By manually entering over 6,000 paper Free & Reduced Lunch applications and assisting families with Supplemental Nutrition Assistance Program (SNAP) applications for direct free school meal qualifying programs like these - our team relieves administrative burdens for the school district and bolsters childhood food security in our community.

ASHLEE, STAFF



321 SNAP
APPS
SUBMITTED

WHERE THEY'RE AT

31

AFTERSCHOOL
MEAL SITES



27

SUMMER
MEAL SITES

“

As a former teacher, I packed protein-rich snacks I could give my kids when I knew they were hungry. Teachers never stop trying to cover their kids' basic needs [, that's why I volunteer for Kids Table- to help the teachers of today.]

BARB, 2 YEAR VOLUNTEER

”

KIDS TABLE



80,806

AFTERSCHOOL MEALS

61,648

SUMMER MEALS

“ Students are able to use snacks to cope, to help them focus on academics instead of hunger, and to fill the gap between meals. We have seen children's ability to stabilize emotionally and academically because of the snack program. ”

- FLORENCE CARLTON SCHOOL STAFF MEMBER

7,664 SERVICES DURING THE 21-22 SCHOOL YEAR

16 PARTNER SCHOOLS



SCHOOL DAY

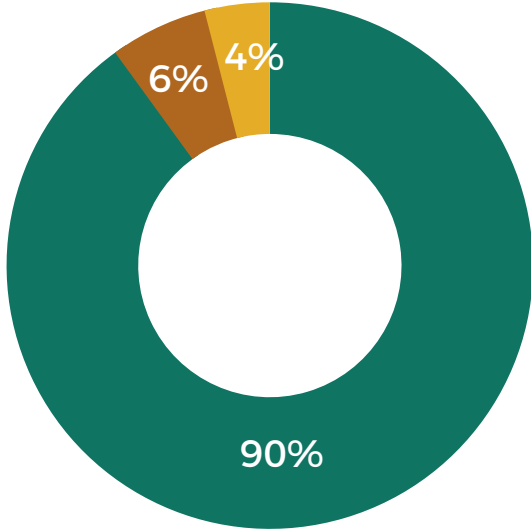
“ This is by far the best outreach program our school has. 100% benefit. ”

- HAWTHORNE ELEMENTARY SCHOOL STAFF MEMBER

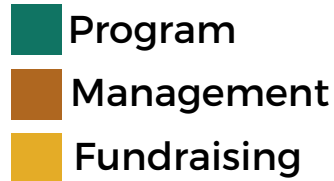
FINANCIALS

FUNCTIONAL EXPENSES

Fiscal Year: July 1-June 30



Total Expenses: \$6,059,150
Includes Value of Food Distributed:
\$2,872,340

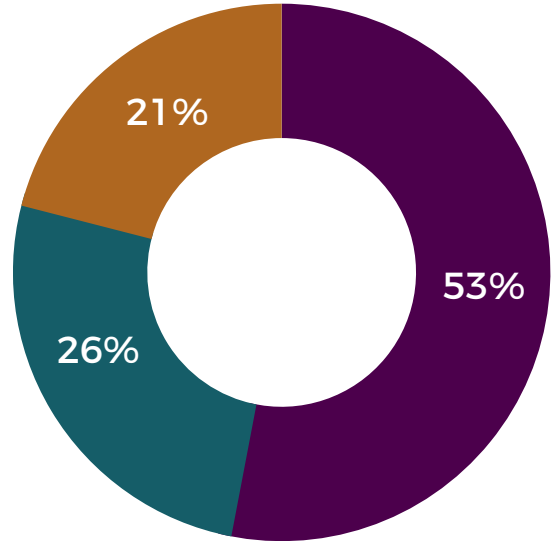


INCOME

Fiscal Year: July 1-June 30

Total Income: \$3,021,991
Does Not Include Donated Food:
\$2,813,369

- Individual Donations
- Corporate & Foundation
- Federal, State, County,
& City Government



BOARD

Ashley Ostheimer Hilliard

Chair

Katherine Cowley

Vice Chair

Lisa Coon

Secretary

Hannah Santa Cruz

Treasurer

Brett Calahan

Amy Esp

Rick England

Hope Fisher

Dacia Griego

Kristina King

Jessica Miller

Aubrey Pongluelert

Dan Seman

Stephanie Wright



40 YEARS OF
NOURISHING
COMMUNITY

TOGETHER



ENVISIONING A
COMMUNITY
THAT EMBRACES
FOOD JUSTICE,
WHERE:



EVERYONE IS
FOOD SECURE

Missoula Food Bank
and Community Center



THOSE MOST
IMPACTED ARE
A LEADING
VOICE IN THE
SOLUTIONS TO
POVERTY AND
HUNGER

NO ONE FEELS
SHAME OR
EXPERIENCES
STIGMA WHEN
ASKING FOR HELP

EVERY CHILD IS NOURISHED
AND HAS AN EQUAL
OPPORTUNITY TO LEARN,
GROW AND SUCCEED

EVERY SENIOR HAS
ACCESS TO THE FOOD
THEY NEED TO AGE
WITH DIGNITY
REGARDLESS OF
MOBILITY,
TRANSPORTATION OR
HEALTH BARRIERS



EVERYONE CAN
AFFORD THEIR
BASIC NEEDS



SOCIAL SAFETY NET
PROGRAMS ARE
RECOGNIZED AS PART
OF THE SOLUTION





1720 Wyoming Street
Missoula, Montana 59801
missoulafoodbank.org

