



2021
ANNUAL REPORT

WE
NOURISH
COMMUNITY



Missoula Food Bank
we nourish community

MISSION

We lead the movement to end hunger through advocacy, volunteerism and healthy food for all.
We nourish community.



LETTER FROM THE EXECUTIVE DIRECTOR

In 2020, the first year of Covid-19, it felt like we existed only in survival mode. We shifted service models and volunteerism practices, and we held our breath for the pandemic to end. At the same time, we saw unprecedented need, as usage at the food bank spiked 20% compared to 2019.

As we faced the 2nd year of a pandemic from our facility at 1720 Wyoming Street, we continued to see high numbers of our neighbors in need. In 2021, 28,832 separate individuals came through our doors, combining for more than 103,000 visits. We also shifted our model to meet the needs of everyone we saw, removing limits on the number of times people can visit us, and also removing limits on how much of some foods people can take when they are here.

The rest of our service programs continued to flex to meet unique needs in unique times. We delivered about 450 food boxes each month to homebound, low-income elders through our ROOTS program, and our Fresh Food Box program expanded significantly, providing more than 100 deliveries each month. Kid nutrition was at the core of our focus, and we provided 40,000 Kids EmPower Packs, ensuring that children had enough to eat over the weekends, while our Kids Table programs served more than 55,000 summer meals and nearly 81,000 afterschool snacks to kids across Missoula.

We also continued to grow our values-based and upstream work, leaning in more and more to systemic issues that are at the core of food insecurity. Our Anti-Racism Task Force expanded and helped guide trainings and internal practices. Our organizing and engagement work brought people together (many via Zoom) to identify obstacles and solutions as all of us strive for a happy and sustainable life in this community.

This is my last annual report letter, as I am leaving the food bank after almost 8 years. There has been so much excitement and joy and adventure during my time here, and I have loved all of it. Thank you for your generosity and for being a part of our work, and for helping us achieve so much. We can't do this without you. I am thankful.

Sincerely,
Aaron Brock

A handwritten signature in black ink, appearing to read 'Aaron Brock', written over a horizontal line.

THE STORE



28,832
Individuals

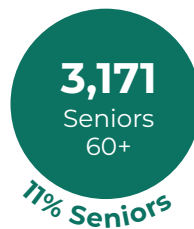
1 in 4 people
in Missoula
County utilized
emergency
food services
in 2021...



9,090
Households

...making up
9,090 unique
households

OUR STORE CUSTOMERS ARE MADE UP OF



The Store doors open to find volunteer greeters and resources assistants eager to help customers. With 1 in 4 Missoulians shopping with us, we work to keep a variety of food items available to customers, including fresh produce, dairy, frozen meat, bakery items, & dry and canned goods. Friendly stockers keep our shelves full while sorters are behind the scenes prepping produce to line the coolers. Boxers are the final faces customers see to pack them up and wish them well, leaving stigma with no place within our walls.

THE STORE





School Day

Kids Table School Day partners with CSCT therapists who order bulk food items for students they work closely with to munch on throughout the school day, ensuring another point of access for students to stay nourished and ready to learn.

17

Schools

4,704

Services

Afterschool

MFB&CC partners with after-school programs including Flagship, Empower Place Parks and Recreation, boys & Girls Club, & Missoula Public Library to provide nutritious meals & snacks for Missoula's youth.

80,673

Meals

29

Partner Programs

KIDS TABLE

Summer

Kids Table Summer serves Missoulians under 18 lacking access to nutritious meals over the summer break. Students without access to stable school meals can rely on Kids Table Summer's community partnerships for lunch and dinner. At libraries, apartments, & schools, MFB&CC is serving up over the summer.

55,225

Breakfast
& Lunches
Distributed

30

Community
Partners

Kids Eat Free Bus

Hop Aboard our mobile meal distribution bus! Stopping at 5 locations during all school breaks, this program brings food access right to young students' doorsteps.

1,000


EmPower
Packs

7,811

Kids Table
Meals

1,060

Grocery
Services



Kids Empower Pack is a weekend nutrition program helping kids stay healthy & nourished when school is not in session. Kids in the program are identified by school officials who recognize behaviors & circumstances of food insecurity. Each EmPower Pack contains 4 entrees, 2 breakfasts, hearty snacks, fresh fruit, and milk, specifically customized for different school ages.

40,041
Packs

1,176
Kids

35
Partners and
Meal Sites

EMPOWER PACK

EMPowerplace

EmPower Place is a hands-on family learning center located at Missoula Food Bank & Community Center and a collaborative effort by spectrUM, Missoula Food Bank and Community Center and Missoula Public Library. Dedicated to nourishing the bodies and minds of local children and families, it is one part community center, one part science museum, one part food hub, and one part library.

31,168

Kids Table
Meals

1,238

Weekend
EmPower
Packs

5,104

Visits from
Local
Families



ROOTS



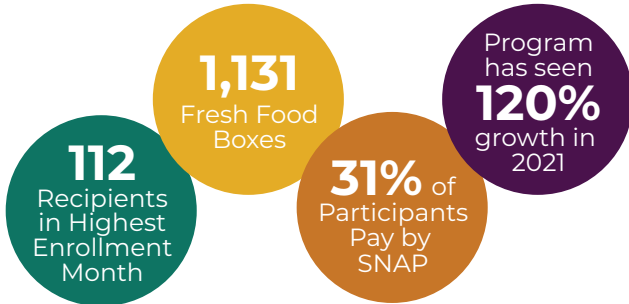
Each month, Missoula Food Bank & Community Center delivers nutritious USDA approved food to elders & seniors who are home-bound in our community. On the second Thursday of each month, staple food items are delivered to the doorsteps of seniors who may have transportation or mobility challenges. Food is also available for pick up, so seniors can also shop our Store. Full of pantry staples, MFB&CC supplements ROOTS boxes with fresh produce and supplemental nutrition drinks.

5,370
ROOTS
Boxes

604
Recipients
in Highest
Enrollment
Month

FRESH FOOD BOX

MFB&CC offers affordable home deliveries of fresh foods once per month for qualifying seniors and those living with disabilities. Each box contains fresh & frozen foods at the lowest possible prices. Participants can pay with many different options including SNAP, cutting the price in half.



SYSTEMIC INEQUITIES

Systemic and structural inequities, particularly the intersections of racism, LGBTQ2S+ discrimination, and socio-economic disparities (classism), are foundations of food insecurity. In our mission and vision to end hunger through advocacy, volunteerism, and healthy food for all, we continue to work to ensure that identities and communities that are most impacted by food insecurity are leading voices in the solutions to poverty and hunger. We, therefore, are committed to anti-racism and allyship.



12.8%
LGBTQ2S+

35.7%
Living with
a disability

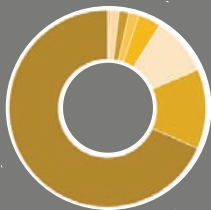
12.6%
Veterans

*percentages for these identities are counted by household

Anti-Racism Task Force

To support our growth and development as an anti-racist organization, Missoula Food Bank & Community Center has developed an Anti-Racism Task Force to align, support, and inform our organizational strategy and action with anti-racism. We are grateful to the dedicated volunteers and community members who are committing their valuable time to shape this work.

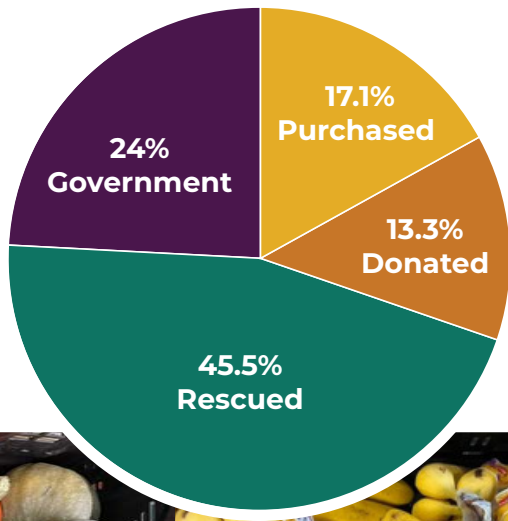
DEMOGRAPHICS



68.4% White
1.60% Black
12.1% Native American
3.73% Latino
1.70% Asian/Pacific Islander
0.50% Middle Eastern
1.40% Multiracial
9.61% Declined to answer

While BIPOC Missoulians account for 11.6% of the population, they are disproportionately represented in our services at 19.3%.

WHERE OUR FOOD COMES FROM



FOOD RESCUE

Grocery Rescue and Food Circle delivers food from 56 partner grocery stores and local restaurants. Our Grocery Rescue program saves food that would otherwise be set aside for the landfill. Instead, this food is hand sorted for freshness and expiration dates, by volunteers, to help stock our food bank shelves.

Our Food Circle program accepts prepared, perishable food from commercial food establishments. Using sanitized containers, excess prepared food is collected at donor establishments by a driver trained in safe food handling then repacked into single serving meals, a highly requested option.

In 2021,
this was
1,011,399
pounds of
food rescued



RESOURCE ASSISTANCE



Our Resource Assistants are one of the first faces customers see in the Store. Sitting down with each customer each time they shop, RAs help get folks acquainted with the store, refer to community resources & events, & listen with an empathetic ear. Resource Assistants made nearly 2,500 resource referrals in 2021 to programs like SNAP, LIEAP, & ROOTS.

We added a Program Application Specialist position to smooth the bumpy road of applying to assistance programs.

214

SNAP
Applications

744

Montana
Emergency
Rental
Assistance
Applications

STRATEGIC PLAN

With participation from all members of MFB&CC's team and Board, we have identified four North Stars as the foundation of our Strategic Plan. It is our aim to pursue these far-reaching goals to make sustained change through operations and advocacy.

End Childhood Food Insecurity in Missoula County

Stigma-free access to healthy school meals for all kids is key. This three-year campaign aims to reduce barriers and make free access to the best school meals available to as many children as possible. Our Kids Table, Kids Empower Pack, & Empower Place programs are in place filling in the gaps.

End Food insecurity experienced by aging adults in Missoula County

Through resource connection and social support for those aging in our community, we work alongside our older neighbors to connect them with important nutrition & other stabilizing resources, including friendly social support as they age. Our ROOTS & Fresh Food Box programs are already in operation nourishing our neighbors

Disrupt Existing Power Structures that uphold systemic inequities

In the gatherings of the Anti-Racism Task Force and Advocacy & Education Board Committee, MFB&CC works to identify our role and areas of influence in power structures. We are making changes at the policy and practice level to create a more equitable world for all people in Missoula County. Our dedication to Safety Net Program Application Assistance operationalizes this goal.

Be a Model Employer

As defined by the team at MFB&CC, a model employer is one which honestly communicates and is creative in its approach to employee support:

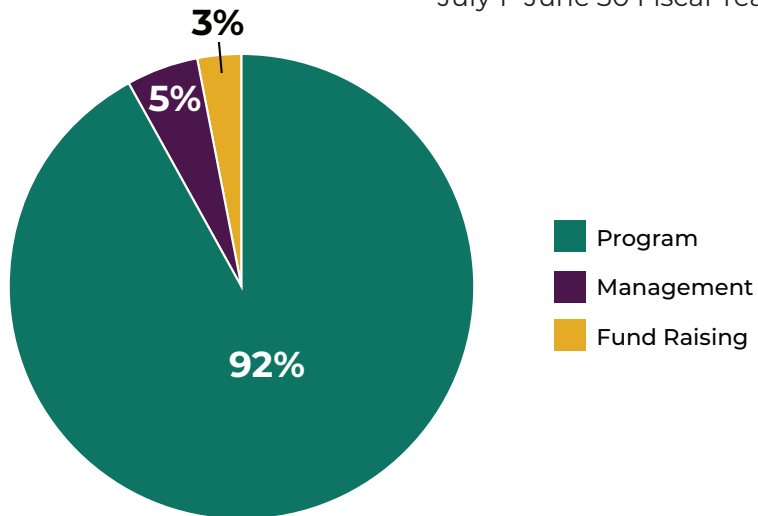
- where employees feel trusted, valued, supported, and cared for;
- where work-life balance is honored in a way that supports employee well-being and ability to fully participate in community at work and outside of work;
- that invests in the growth and retention of employees and recognizes employee contributions;
- that values and supports a workforce with diverse lived experiences; and
- that recognizes the organization's role in power structures.

FINANCIALS

FUNCTIONAL EXPENSES

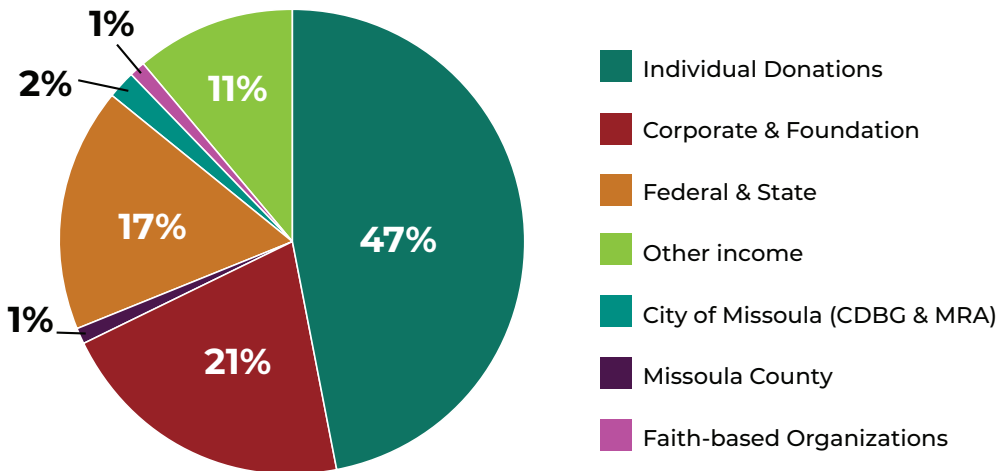
Operational Budget \$6,435,233

July 1- June 30 Fiscal Year



FINANCIALS

INCOME PERCENTAGES



BOARD & STAFF

Kari Schauss
Chair

Ashley Ostheimer Hilliard
Vice Chair

Katherine Cowley
Secretary

Brett Calahan
Treasurer

Lisa Coon

Rick England

Hope Fischer

Kristina King

Jessica Miller

Aubrey Pongluegert

Hannah Santa Cruz

Lew Stasso

Makaya Stone

Stephanie Wright

Aaron Brock
Executive Director

Jessica Allred
Director of Development & Advocacy

Gregg Ascuitto
Warehouse and Purchasing Manager

Amanda Ceasar
Events & Marketing Coordinator

Maggie Bornstein
Donor Engagement Coordinator

Bob Christian
Driver/Receiving Assistant

Ashley Clark
Child Nutrition and Program Coordinator

Jessica Harrell
Senior Nutrition and Outreach Coordinator

Kelli Hess
Director of Operations

Taylor Hill
Americorps Leader

Steven Kirst
Store Services Coordinator

Jamie Kocsondy
Program Manager

Marcus Omeasoo
Volunteer Coordinator

Rebecca Paquette
Development & Research Coordinator

Paula Raines
Office Administrator

Ashlee Schleicher
EmPower Place Coordinator

Rajiem Seabrook
*Director of Community Organizing
& Equity*

Caitlyn Taix
Service Team Manager

Cameron Van Beek
Warehouse Assistant

Hannah Kosel
Application Specialist

Claire Burgeson
Family Engagement Assistant

Carmen Hamm
Jesuit Volunteer/Americorps Member

Jack Carmody
Americorps member

THANK YOU FOR BEING PART
OF THIS WORK

The word "TOGETHER" is displayed in a large, bold, sans-serif font. Each letter is filled with a different photograph of fresh produce: 'T' shows a carton of brown eggs; 'O' shows a mix of red and green bell peppers; 'G' shows a pile of purple onions; 'E' shows a wooden crate of green apples; 'T' shows a pile of red tomatoes; 'H' shows a head of green broccoli; 'E' shows a wooden crate of yellow and orange bell peppers; 'R' shows a blue plastic bin filled with small onions.

We nourish community.



1720 Wyoming Street
Missoula, Montana 59801
www.missoulafoodbank.org